

May/June 2011

- [Franchisee Honored](#)
- [Connecticut](#)
- [New Jersey](#)
- [Corporate News](#)
- [Contact Info](#)
- [Used Equipment](#)

Check out our Facebook page and "Like" us to follow.
 To remove your name from our mailing list, please [click here](#), or call 800-218-6833 ext. 107

### Calendar of Events

<b>May</b>		<b>June</b> (con't)	
Memorial Day	30th	Shavou'ot / Pentecost	8th
<b>June</b>		Flag Day	14th
National Rose Month		Father's Day	19th
National Dairy Month		Summer Solstice	21st
World Environment Day	5th		

[Back to Top](#)

## Quotes from the Garden

The earth laughs in flowers.  
e. e. cummings

There can be no other occupation like gardening in which, if you were to creep up behind someone at their work, you would find them smiling. ~Mirabel Osler

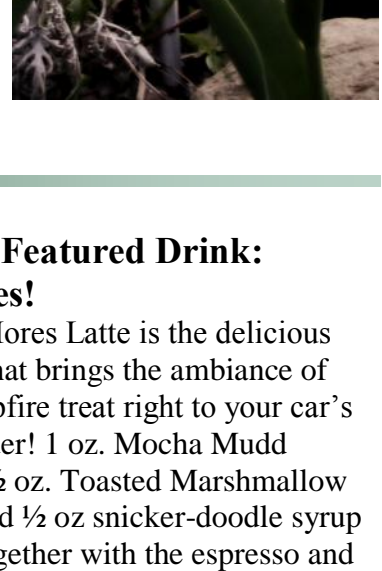
The greatest gift of the garden is the restoration of the five senses. ~Hanna Rion

God made rainy days so gardeners could get the housework done. ~Author Unknown

Take thy plastic spade,  
It is thy pencil; take thy seeds, thy plants,  
They are thy colours.  
~William Mason, *The English Garden*, 1782

Many things grow in the garden that were never sown there. ~Thomas Fuller, *Gnomologia*, 1732

Gardens... should be like lovely, well-shaped girls: all curves, secret corners, unexpected deviations, seductive surprises and then still more curves. ~H.E. Bates, *A Love of Flowers*



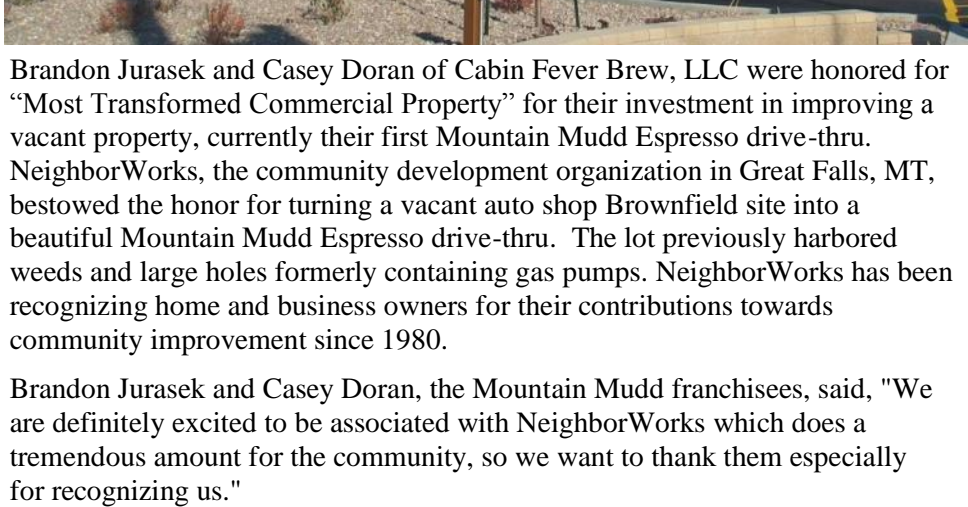
**June's Featured Drink: S'Mores!**

The S'Mores Latte is the delicious potion that brings the ambiance of the campfire treat right to your car's cup holder! 1 oz. Mocha Mudd Sauce, ½ oz. Toasted Marshmallow syrup and ½ oz snicker-doodle syrup come together with the espresso and frothed milk to make you want s'more! All the goodness without the stinky smell of campfire on your clothes (or sticky hands).

Our Billings kiosks are giving away four \$50 gift cards for Father's Day from our favorite local outdoors retailer. Contact [Pat Dunbar](#) for more info!

[Back to Top](#)

## Mountain Mudd Franchisee Honored



Brandon Jurasek and Casey Doran of Cabin Fever Brew, LLC were honored for "Most Transformed Commercial Property" for their investment in improving a vacant property, currently their first Mountain Mudd Espresso drive-thru. NeighborWorks, the community development organization in Great Falls, MT, bestowed the honor for turning a vacant auto shop Brownfield site into a beautiful Mountain Mudd Espresso drive-thru. The lot previously harbored weeds and large holes formerly containing gas pumps. NeighborWorks has been recognizing home and business owners for their contributions towards community improvement since 1980.

Brandon Jurasek and Casey Doran, the Mountain Mudd franchisees, said, "We are definitely excited to be associated with NeighborWorks which does a tremendous amount for the community, so we want to thank them especially for recognizing us."

Congratulations Casey & Brandon, for your vision and hard work. Thank You for being such fine ambassadors of the Mountain Mudd brand!

See More At: [KFBB](#) [KRTV](#) [Great Falls Tribune](#)

[Back to Top](#)

## Mountain Mudd Expanding Into Connecticut



*The highest point in Connecticut is the South Slope of Mount Frisell at 2,380 ft. (It's peak is in Massachusetts) Photo courtesy Wikipedia-Heatkernal*

ST. PAUL, Minn. -- Mountain Mudd Espresso, the drive-thru specialty coffee brand of CHS Inc., is expanding into Connecticut through a long-term contract with PJP Coffee Enterprises Inc. The first phase of development includes opening two Mountain Mudd kiosks in Hartford and Litchfield counties in 2011, with plans to develop 38 additional franchise locations in the state by early 2016.

"I'm thrilled to represent the Mountain Mudd brand and bring world-class specialty coffee drinks to the Nutmeg State," stated Phillip J. Penn, owner of PJP Coffee Enterprises, who is already a minority owner of two non-competing beverage businesses.

Gary Braaten, president of Mountain Mudd operations for CHS, added: "We are excited to grow into the Connecticut market and move into this strategic relationship with Phil Penn. Phil's experience and entrepreneurial spirit are impressive, and his personal passion for the brand is contagious. This expansion fits our mission of becoming the dominant, premier drive-thru specialty coffee retailer worldwide. The success of our franchisees is our highest priority."

Despite the weak economic backdrop, Mountain Mudd Espresso's system-wide sales held strong in 2010 and are slated for substantial growth in 2011, according to Braaten.

"Mountain Mudd locations offer the same great experience and selectable products, whether you order your latte in Burlington, Conn., or Byblos, Lebanon," Jill Mason, Mountain Mudd national sales consultant, said in a statement.

"Progressive entrepreneurs recognize the value of this brand and are capitalizing on the market for convenient, premium beverages." Recently named to *Entrepreneur's* 32nd annual Franchise 500 list, Mountain Mudd is currently seeking expansion in the United States and select international markets.

CHS Inc. is a diversified energy, grains and foods company. The St. Paul, Minn.-based company operates petroleum refineries/pipelines and manufactures, markets and distributes Cenex® brand refined fuels, lubricants, propane and renewable energy products.

Convenience Store News [http://foodservice.cnews.com/top-story-mountain\\_mudd\\_expanding\\_into\\_connecticut-843.html](http://foodservice.cnews.com/top-story-mountain_mudd_expanding_into_connecticut-843.html)

[Back to Top](#)

## Mountain Mudd® expands in New Jersey

ST. PAUL, Minn., May XX, 2011 — Mountain Mudd® Espresso drive-thru specialty coffee, a brand of CHS, is expanding into Morris County, N.J., through a strategic partnership with C Baggio Beverages that calls for 24 stores by 2014. The first Mountain Mudd location in Morris County will be a kiosk open from 6 a.m. to 6 p.m. seven days a week.

C Baggio Beverages plans to open and operate a number of drive-thru kiosks and mobile carts in Morris County, and will also actively recruit other entrepreneurs and assist them with opening their own Mountain Mudd locations. "I am thrilled to be part of the Mountain Mudd family," says Chris Baggio, president of C Baggio Beverages. "We look forward to serving commuting professionals with discerning palates and busy families and consumers on-the-go with our conveniently located drive-thru kiosks

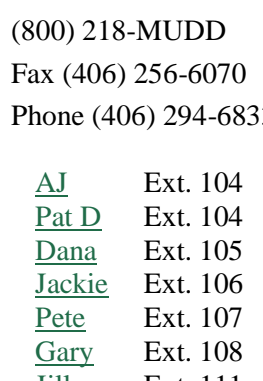
and menu of over 200 delicious hot and cold beverages."

Home to more than 50 Fortune 500 businesses (according to the Morris County Chamber of Commerce), Morris County was ranked sixth best place in the nation to raise a family by *Forbes* in 2009. "We could not ignore this mix of family and corporate interest when choosing the first county in New Jersey for full development," says Gary Braaten, president of Mountain Mudd operations for CHS, a Fortune 100 company with resources in energy, grains and foods. Most U.S. coffee consumers are between the ages of 29 and 50, and 90 percent of all Americans consume coffee on a daily basis.

"Chris Baggio is an exciting addition to the Mountain Mudd network," adds Braaten. "He is an entrepreneurial and visionary partner who shares our vision of making Mountain Mudd the dominant, premier drive-thru specialty coffee brand worldwide."

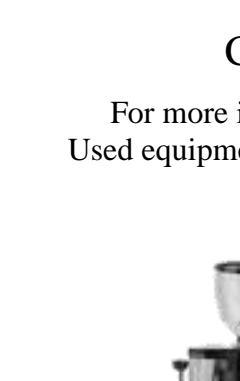
[Back to Top](#)

## Corporate News



We would like to welcome three franchisees that joined the family within the last month:

- William and Kari Crowth of Glenwood Springs, CO, Single-unit;
- James and Ruth Webster of Burlington, WI, Single-unit;
- Bret Baugh of Jonesboro, AR, Multi-unit (3).



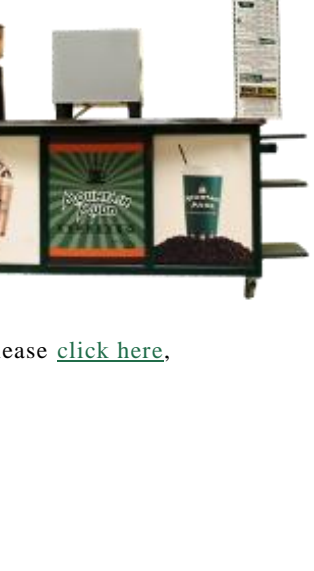
Local hero Diane Bertrand was the top fundraiser for the Susan G Komen Race for the Cure event in Helena on May 21<sup>st</sup>. With the help from Dana and Mountain Mudd, \$1,446 was donated to Susan G. Komen on Diane's behalf. We sold 723 pink tumblers from Oct. 1<sup>st</sup> – April 30<sup>th</sup>.  
Read More [HERE](#)

Mountain Mudd Espresso is the Official coffee of the Billings Mustangs again this year! The season starts June 20th with home-stand Park against the Great Falls Voyagers at Dehler Park. Mountain Mudd Espresso will have a kiosk on-site to keep fans happy with their favorite espresso drink, coffee or granita!



### Featured Baristas

Lisa Hufnagel is one of our star barista's at the Montana kiosk. Lisa has worked at Mountain Mudd for over a year and always seems to have a smile on her face. She enjoys her job as a barista because she meets many new people and learns what drinks they like so they come back and see her again. When she is not working, Lisa attends college at MSU-Billings or can be found hiking or fishing.



Meet Anysa Maciel. She works weekends and after school during the week. Anysa is a newbie at Mountain Mudd but has caught on quick. She always has a great attitude and her drinks are excellent. Anysa recently won a competition at the Rimrock Mall for their recycled runway event and won a mall gift card. She made a dress out of recycled pop cans and newspaper. Anysa will be a senior in high school next year and on her free time she plays basketball and Gary's favorite, volleyball.

## Great Coffee, Great People™



Check out more CHS news at "[C Your CHS Connection](#)" online magazine  
[Back to Top](#)



Corporate Offices  
2120 3rd Ave N.  
Billings, MT 59101

(800) 218-MUDD  
Fax (406) 256-6070  
Phone (406) 294-6833

**CHS** Inc. ([www.chsinc.com](http://www.chsinc.com)) is a diversified energy, grains and foods company committed to providing the essential resources that enrich lives around the world. A Fortune 100 company, CHS is owned by farmers, ranchers and cooperatives, along with thousands of preferred stockholders, across the United States. CHS supplies energy, crop nutrients, grain, livestock feed, food and food ingredients, along with business solutions including insurance, financial and risk management services. The company operates petroleum refineries/pipelines and manufactures, markets and distributes Cenex® brand refined fuels, lubricants, propane and renewable energy products. CHS is listed on the NASDAQ at CHSCP.

[Back to Top](#)

## Used Equipment For Sale!

### Call for Equipment & Pricing!

For more information call Patrick Byrd at 406-294-6833  
Used equipment inventory may change daily so call for current updates on machines available.



### Several Modular Models Available!



To remove your name from our mailing list, please [click here](#), or call 800-218-6833 ext. 107

[Back to Top](#)